



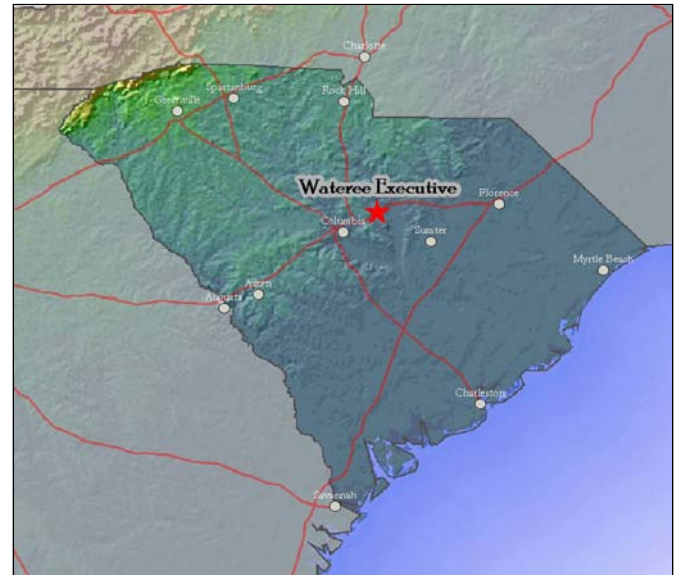
Site Information and Location Map

Location

Community: Elgin
County: Kershaw

Physical Characteristics

Size: 60 acres/24 hectares
Total Certified Acres:
Subdividable: Yes, by 20 acre(s)
Price per Acre: \$25,000
Price Range:
Soil Type: sand, loam
Elevation Range: 183 to 258 feet



Transportation Access

Interstate(s): I-20: 0 miles/ km; I-77 : 12 miles/19 km
Commercial Airport: Columbia Metropolitan: 27 miles/43 km
Private Airport: Woodward Field: 16 miles/26 km
Rail: None
Container Port: Charleston : 118 miles/189 km

Community Information

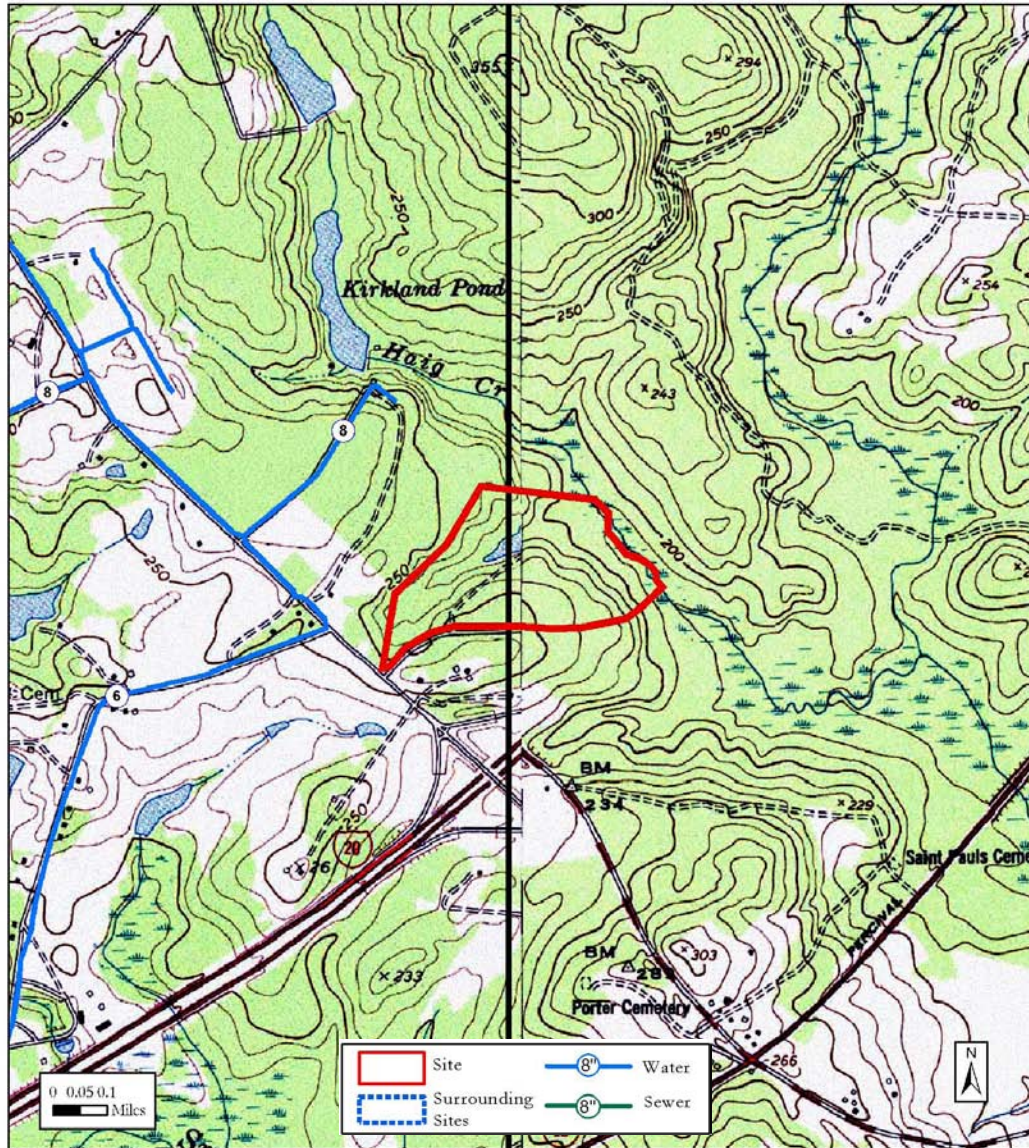
Rural Development Act: Developed
Foreign Trade Zone: No
Multicounty Industrial Park: No
Related Counties:
Tax Map ID:
Zoned Industrial: No
Zoning or Regulations: Not Reported
Current Landuse(s): Dormant
Surrounding Landuse(s): Residential, Commercial, Industrial

Contacts

South Carolina Department of Commerce
1201 Main Street, Suite 1600
Columbia, SC 29201
(803) 737-0400
info@sccommerce.com

Kershaw County Economic Development Board
PO Box 763
Camden SC 29020
(803) 425-7685

This is a product of the South Carolina Department of Commerce (DOC). The information is derived from various sources and the DOC does not guarantee its accuracy nor make any representations concerning the suitability of the property for any particular purpose.



Utilities and Services

Water Service:	Lugoff Elgin Water Auth on site	Size: 6 inches
Sewer Service:	Town of Kershaw on site	Size: 10 inches
Electric Service:	Fairfield Electric Cooperative	
Natural Gas:	South Carolina Pipeline 6800 LF from site	Size: 2 inches
Fire Protection:	Kershaw County Fire Dept.	ISO Rating: 6